

Patient Information prior to exam

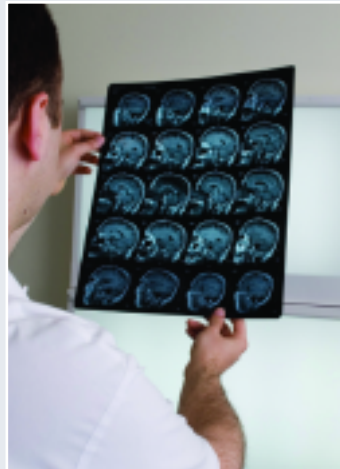
Please arrive 30 minutes prior to your scheduled appointment to allow time to register at the outpatient entrance. Bring a list of all the medications you are taking, including over-the-counter products such as aspirin or herbal remedies. Prior to your exam, we will review your medical history. If you are having a procedure that requires contrast injection, and have a prior history of asthma or severe allergies, please discuss this with your physician prior to your appointment, since premedication may be required.

Your Rights

When you register for your procedure, you will be asked to sign a "Notice of Privacy Practices" and General Consent for Treatment" form. You will also receive a copy of the "North Carolina Patient Bill of Rights". If you wish to have your health information restricted in any way, please make that request at this time. Minors will need a parent or authorized representative to sign the consent and show proof of their legal designation. Arrangements for the necessary authorization may be made the day prior to your procedure.

After Your Procedure

Once your procedure is completed our Board Certified Radiologists will interpret the study and send a final report to your ordering physician within 48-72 hours. Your physician will be able to discuss the results with you. In addition, the Technologists will review any post procedure instructions with you prior to your leaving.



From Henderson

Highway 39/401 South to Louisburg

From Wake Forest/Youngsville

US1 to Highway 56 East to Louisburg
or Highway 98 East to Highway 401 North to Louisburg

Hospital Entrance

Enter the hospital through the Outpatient/Admissions entrance off of Bickett Boulevard/Highway 401. The entrance is directly beside the Emergency Entrance.



100 Hospital Drive | Louisburg, NC 27549

Hospital (919) 496-5131

One call scheduling (919) 497-8410

For more information (919) 497-8483

www.franklinregionalmedicalctr.com



...taking care of you
Our Radiology Services

About Our Diagnostic Imaging Services

Diagnostic Imaging Services of Franklin Regional Medical Center perform a wide range of diagnostic and interventional procedures. Our staff is comprised of ARRT Registered Technologists and Board Certified, Fellowship and Subspecialty trained Radiologists. Our team is dedicated to providing each patient a personalized experience. We offer services to patients in the Emergency Room, in the Outpatient and Inpatient settings. Some of the procedures we offer are:

- Stereotactic Breast Biopsy
- Lung Biopsy and drainage procedures
- Computed Tomography (CT)
- Magnetic Resonance Imaging (MRI)
- Ultrasound
- Nuclear Medicine
- Mammography
- Diagnostic Imaging



In December 2007 Franklin Regional Medical Center added a new Philips Achieva MRI unit.

Mammography Services

Franklin Regional Medical Center has Accreditations from both the American College of Radiology (ACR) and the Mammography Quality Standards Act (MQSA). These Accreditations assure you and your physician of the highest practice standards in Mammography today.

After your Mammogram, we utilize Computer Aided Detection (CAD) technology. CAD is a sophisticated FDA-approved technology that helps radiologists identify characteristics that may be associated with various forms

of cancer. By using iCAD patented algorithms to mark suspicious areas, CAD serves as a "second pair of eyes" and acts very much like a "spellchecker" to identify characteristics that may warrant a second look by the radiologist.

The use of CAD technology as part of the mammography screening process adds a layer of quality assurance. By helping radiologists detect up to 68% of actionable missed cancers an average of 15 months earlier than screening mammography alone, our CAD enhances performance, improves confidence and reduces variability due to fatigue, distraction or workload. The early detection of breast cancer can save lives and often permits less costly and less invasive cancer treatment options than when detected at a later stage.



Breast Biopsy Procedures

Lumps or masses in the breast are not unusual, and most of them are not cancerous. Some breast masses can be felt during a breast exam. Others are detectable only by mammogram-breast X-ray. How a mass is detected does not determine whether it is cancerous. Breast lumps should be evaluated by a physician experienced in diagnosing breast cancer. This is often done with a stereotactic breast biopsy.

When a breast biopsy is recommended for an abnormal mammogram finding, patients at Franklin Regional Medical Center can opt for a minimally invasive alternative to surgery known as stereotactic breast biopsy. Stereotactic breast biopsy is a biopsy that does not require surgery. For more information regarding this procedure call (919) 497-8483

Computed Tomography (CT)

Computed tomography (CT or CAT scan) is a diagnostic imaging procedure that uses a combination of x-rays and computer technology to produce cross-sectional images (often called slices), both horizontally and vertically, of the body. A CT scan shows detailed images of any part of the body, including the bones, muscles, fat, and organs. CT scans are more detailed than standard x-rays.



How the CT is performed

You will be asked to lie on a narrow table that slides into the center of the scanner. Depending on the study being performed, you may need to lie on your stomach, back, or side. If contrast dye is to be administered, an IV will be placed in a small vein in your hand or arm.

Much like standard photographic cameras, any motion you make causes blurred images in CT. Therefore, the operator will give you instructions through an intercom on when to hold your breath and not move.

As the exam takes place, the table will advance small intervals through the scanner. Modern "spiral" scanners can perform the exam in one continuous motion. Generally, complete scans will only take a few minutes. However, additional contrast-enhanced or higher-resolution scans will add to the scan time. The newest multidetector scanners can image your entire body, head to toe, in less than 30 seconds.

How to prepare for your CT

You may be asked to drink contrast prior to the CT scan, the contrast may be non-reactive, chalky-tasting barium sulfate, which will eventually pass in your stools, or absorbable clear Gastrografin solution. You may also be asked to fast (no solids or liquids) if contrast dye is to be used.

Bone Mineral Density Test (DEXA)

(DEXA) scans measure the bone density at your hip or spine. This test offers very precise results and is the preferred test for diagnosing osteoporosis. During this test, you will lie on a padded platform for a few minutes while an imager, a mechanical arm-like device, passes over your body. It won't touch you. This test usually takes five to 10 minutes to complete. This test can help in several ways:



- BMD testing is one of the most accurate ways to assess your bone health
- When repeated over time, it can be used to monitor your rate of bone loss.
- It can detect osteoporosis at its earliest stage, so treatment can begin sooner.
- If you are being treated for osteoporosis, BMD testing can help your health care provider monitor your response to the treatment.